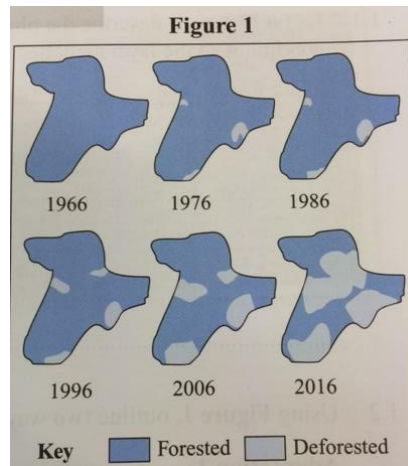


Tropical Rainforests Homework 3

Study Figure 1, a series of maps showing the extend of deforestation in an area between 1966-2016.



1) Using figure 1, describe the changes in the rainforest between 1966-1996 (2)

.....

.....

.....

.....

.....

.....

2) Outline 2 possible causes of deforestation (2)

1.....

.....

.....

2.....

.....

.....

3) Outline 1 positive economic impact of deforestation (1)

.....

.....

.....

4) Outline 2 environmental impacts of deforestation (2)

1.....

.....

.....

.....

.....

.....

2.....

.....

.....

.....

.....