



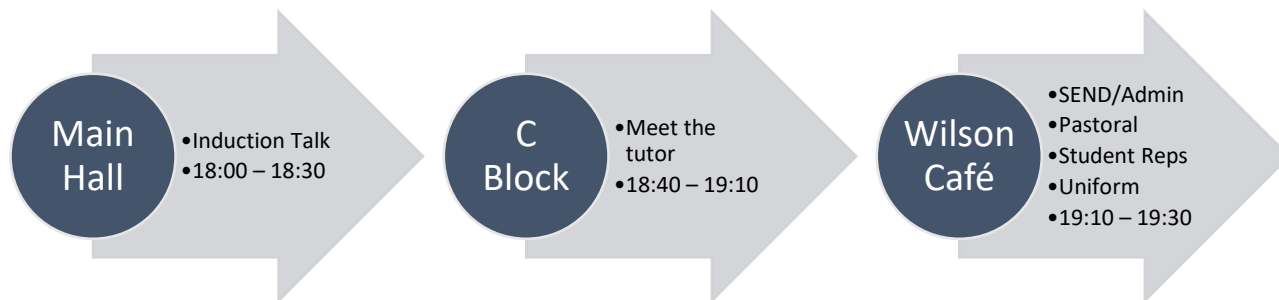
Meet the tutor
10th July 2023



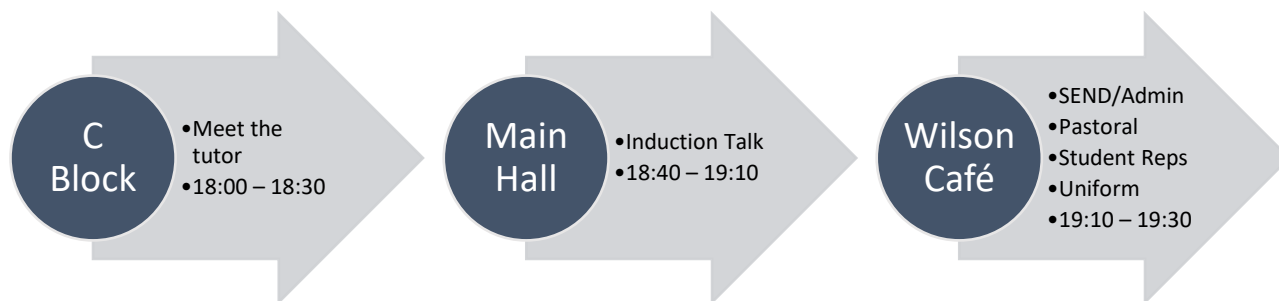


Year 6 Induction evening

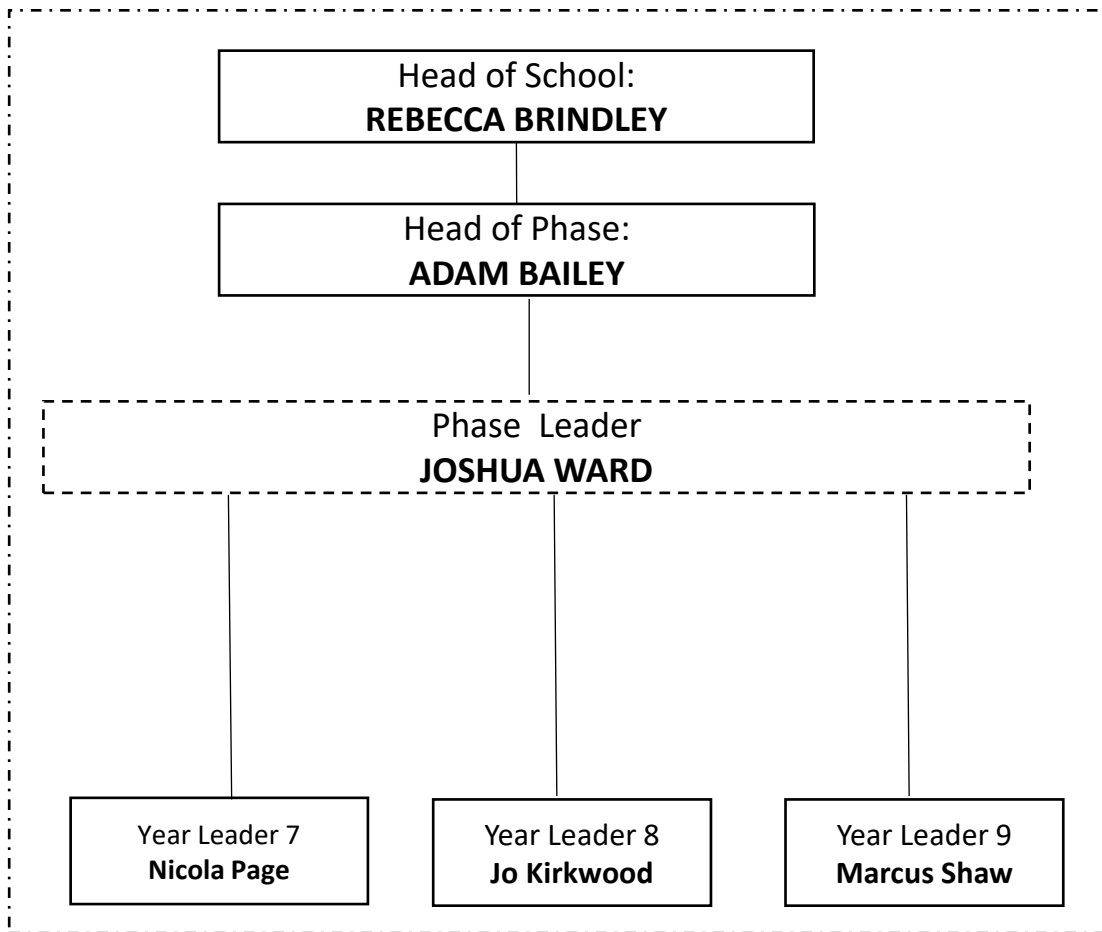
Group 1: **Brocklebank / Clayton / Humphries / King** (**Beauchamp** and **Dudley**)



Group 2: **Davis / Bradshaw / Woodward / Lambert** (**Greville** and **Newburgh**)



- **Representatives from SEND, Admin, Pastoral and Student Leadership are available in the Wilson Café in between session 1 and 2 and at the end of the evening.**
- **Clive Marks representatives are also present in the Wilson Canteen**
- **Fire alarm arrangements – follow staff instructions and assemble on the field**



Meet the tutor

Role of the tutor

- ❑ Lead tutor time every day 8:40 – 9:05
- ❑ Ensure students are lined up on the tennis courts at 8:40 every morning
- ❑ Develop and support the health, wellbeing and academic progress of students
- ❑ First point of contact with home
- ❑ Encourage good school attendance
- ❑ Encourage positive learning behaviours & rewards
- ❑ Daily checks of equipment and uniform – follow up with home when standards are not met
- ❑ Discuss current affairs/ key topics following a structured PSHE tutor programme

	Weekly Tutor Schedule
Monday	SPIRIT, Lates, Uniform and Equipment
Tuesday	Year 7 Assembly
Wednesday	Assembly theme activity/ Current affairs or key issues / PSHE
Thursday	Numeracy
Friday	Literacy

Timings of the school day

8.40am	Line up on tennis courts
8.45-9.05am	Registration
9.05-10.05am	Period 1
10.05-11.05am	Period 2
11.05-11.25am	Break
11.25-12.25am	Period 3
12.25-1.05pm	Lunch
1.10-2.10pm	Period 4
2.10-3.10pm	Period 5
3.10pm (bell rings)	Leave school site

A culture of engagement

To support your child's learning and personal development, attending school each day and ensuring that they arrive to school on time (before 8.40am) is important. This will ensure they don't miss any learning could help to support their mental health and well-being by being prepared and ready to engage positively with the day



The Coleshill School Uniform

Boys school Uniform

- Black Blazer with embroidered school badge * or Black Blazer/With sewn on school badge*
- House Tie*
- Black Tailored Trousers (not skin tight or jeans.)
- Plain White Shirt (with collar to take tie and must be able to be tucked into trousers)
- Black round or V Necked Jumper (optional) – No hooded jumpers or with logos on
- Black socks
- Plain Black Belt with Plain Buckle
- Smart black polished shoes – No trainers with bubbles, visibly branded or logoed shoes. (No different coloured soles or logos and made from polishable leather (or leather substitute), no canvas is allowed).

Girls school Uniform

- Black Blazer with embroidered school badge or * With sewn on school badge*
- House Tie*
- Black Tailored Trousers (with no zips or buttons, not skin tight, jeans or leggings)
- Black Skirt
- Plain White Shirt (with collar to take tie and must be able to be tucked into skirt or trousers)
- Black round or V Necked Jumper (optional) – No hooded jumpers or with logos on
- Black socks
- Black or Neutral Tights (not patterned)
- Plain Black Belt with Plain Buckle
- Smart black polished shoes – No trainers with bubbles, visibly branded or logoed shoes. (No different coloured soles or logos and made from polishable leather (or leather substitute), no canvas is allowed).

Boys PE Kit

Socks

Shorts

Tracksuit bottoms

t-shirt (house colours)

¼ zip top (house colours)

Hoodie (optional, cannot be used for contact invasion sports such as rugby/football)



Girls PE Kit

Socks

Shorts

Tracksuit bottoms

Leggings

Cycling shorts

t-shirt (house colours)

¼ zip top (house colours)

Hoodie (optional, cannot be used for contact invasion sports such as rugby/football. Must be Coleshill branded)



<p>Uniform Suppliers</p> <p>Most garments may be purchased in stores throughout the area.</p> <p>However, school badges, house ties and items in house colours or with the school logo on can only be purchased through our school suppliers. Purchases can be made:</p> <ul style="list-style-type: none"> • Online • At the store in Sheldon <p>Clive Mark Schoolwear 2286 Coventry Road Sheldon B26 3JR 0121 722 2286 www.clivemark.co.uk</p>	<p>Hair</p> <ul style="list-style-type: none"> • In general hairstyles should be neat and conservative. They should not be excessive or extreme, e.g. Closely or decoratively shaved patterns on the scalp. • If unsure parents/Carers should seek guidance from the appropriate Year Leader about the suitability of hair style BEFORE a visit to the hairdresser, if their child is considering a hair style which differs from the norm or may be considered as extreme. • Colours which are extreme and not natural e.g. green/red/blue/pink/purple are not acceptable for school. • Hair accessories must be black, small, unobtrusive and functional <p>Jewellery</p> <p>The only acceptable items are:</p>	<p>Personal Equipment</p> <ul style="list-style-type: none"> • A strong waterproof bag for carrying books and belongings • A pencil case with blue/black pens, coloured pencils or felts, ruler, and rubber • Protractor, compass and a scientific calculator for Maths
<p>Coats/Hats</p> <ul style="list-style-type: none"> • Coats should be waterproof, black and long sleeved • Coats must not be worn instead of the school blazer • Hoodies are not allowed and must not be worn in place of a coat – they will be confiscated • Gilets are not allowed and must not be worn in place of a coat – they will be confiscated • Coats must not be worn in classrooms (unless permission from the teacher) • Hats must not be worn whilst in school uniform • Hoodies, sweatshirts, cardigans or vest tops (including gilets) should not be worn in school 	<ul style="list-style-type: none"> • A wristwatch • One pair of plain small earlobe studs. Other body piercings are not permitted. • One plain small nose stud. • Excessive jewellery should not be worn including bracelets or rings. If you have any concerns please contact the appropriate Year leader • Any jewellery worn is brought to school at their own risk <p>Make-Up</p> <ul style="list-style-type: none"> • Excessive long false eyelashes are not allowed • Excessively long false/acrylic nails are not allowed • Excessive makeup with not be allowed and students advised to correct 	<p>School Equipment</p> <ul style="list-style-type: none"> • Red Pen – for DIRT and Red Zone work • Black Pen – for all other writing • Pencil • Ruler • Eraser • Calculator (Casio FX-85GTX) • Reading Book <p>ALL students must have a copy of their own timetable to refer to during the day</p>

Uniform and Equipment checklist

Boys

Socks
Shorts
Tracksuit bottoms
t-shirt (house colours)
¼ zip top (house colours)
Hoodie (optional, cannot be used for contact invasion sports such as rugby/football)

Girls

Socks
Shorts
Tracksuit bottoms
Leggings
Cycling shorts
t-shirt (house colours)
¼ zip top (house colours)
Hoodie (optional, cannot be used for contact invasion sports such as rugby/football. Must be Coleshill branded)



If you require any additional support, help or guidance in relation to uniform please contact the relevant Phase Leader (Mr Ward) who will be able to discuss this with you in more detail.

In September, any queries related to your child should go to the form tutor in the first instance

Social Times

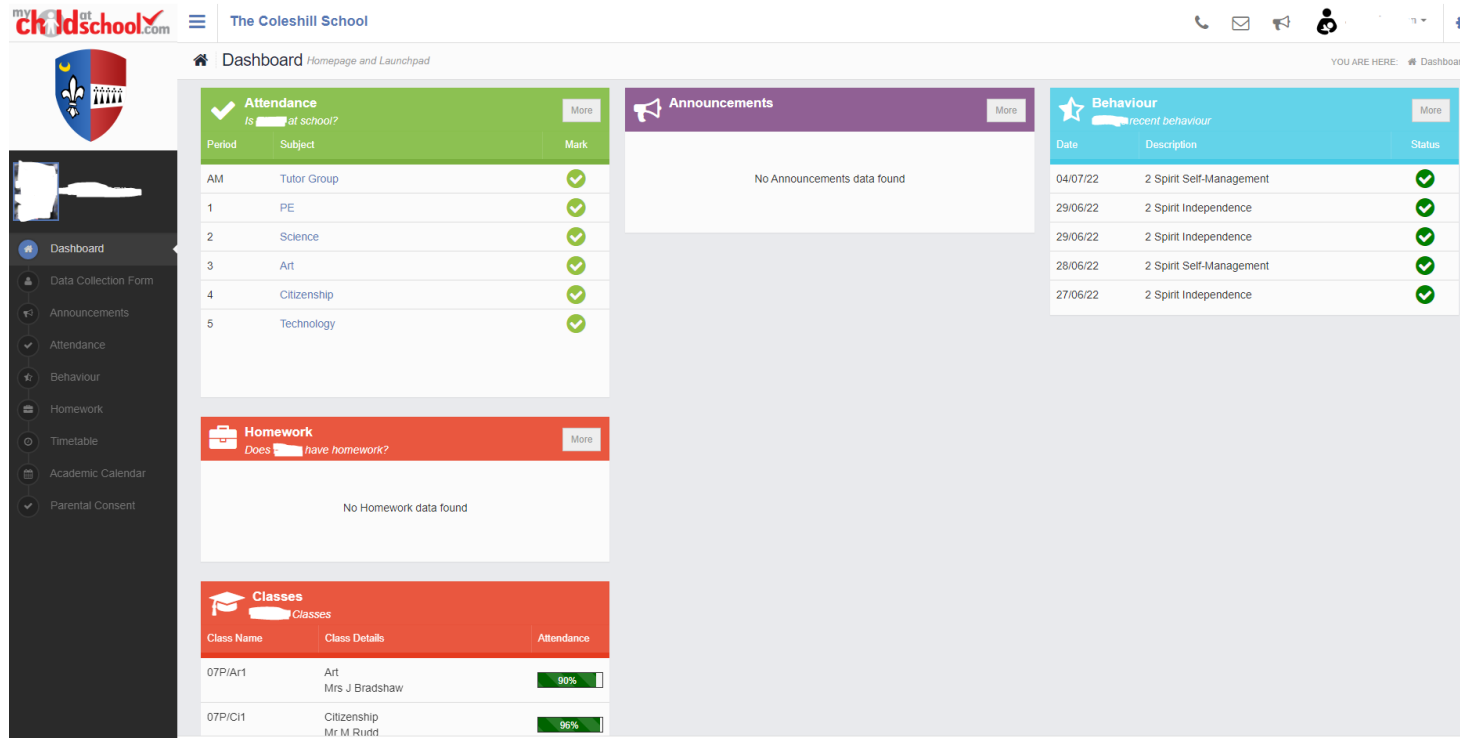
Before school: Students will meet at 8:40am on the tennis courts for line up

Break time: Tennis court & access to the canteen

Lunch time: Tennis court. Access to the canteen, dining hall & Library

Monday	Tuesday	Wednesday	Thursday	Friday
Phase 1 Homework Club Lunchtime Library	Homework Club Lunchtime Library	Homework Club Lunchtime Library	Homework Club Lunchtime Library	Homework Club Lunchtime Library
Homework Club After School Library	Drama Club After School D1	Algebra Award <i>Invite Only!</i>	Childrens University Lunchtime B8	Community & Social Action Group Lunchtime A14
<div> <div>The Coleshill School Enrichment Summer Term 2023</div> <div>*subject to change each term</div> </div>	Phase 1 STEM Club After School A10	Design and Technology Club After School E3	KS4 Exam Preparation Lunchtime C9	
	Year 10 Music Club After School D2	Young Enterprise After School A1	Writing Club After School C5	
	Year 9 Arts Award After School D1	Indoor Cricket After School PE	#52frames Photography After School E2	
	Athletics Club After School PE	Rounders After School PE	Mathemania After School W6	
	6 th Form Debate Club After School C3	Tennis After School <i>Start date TBC</i>	Softball After School PE	
	Homework Club After School Library	KS4 Book Club After School Library	School Games <i>Event will be advertised in PE each week!</i> PE	
			Homework Club After School Library	

- At The Coleshill School we have a parent portal called My Child At School (MCAS)
- You will have received details on email about how to get your account set up
- Once you have set this up you can access a range of information about your child at school online at the website:
<https://www.mychildatschool.com/MCAS/MCSParentLogin>
- You can also access the information through the app



The screenshot shows the MCAS parent portal interface. The top navigation bar includes the school logo, the school name 'The Coleshill School', and a 'Dashboard' link. The main content area is divided into several sections:

- Attendance:** A table showing attendance for the AM period across five subjects: Tutor Group, PE, Science, Art, and Technology. All subjects show a green checkmark, indicating 100% attendance.
- Announcements:** A section stating 'No Announcements data found'.
- Behaviour:** A table showing recent behaviour records. The table has columns for Date, Description, and Status. The records are:

Date	Description	Status
04/07/22	2 Spirit Self-Management	✓
29/06/22	2 Spirit Independence	✓
29/06/22	2 Spirit Independence	✓
28/06/22	2 Spirit Self-Management	✓
27/06/22	2 Spirit Independence	✓
- Homework:** A section stating 'No Homework data found'.
- Classes:** A table showing class details and attendance. The table has columns for Class Name, Class Details, and Attendance. The records are:

Class Name	Class Details	Attendance
07P/Ar1	Art Mrs J Bradshaw	90%
07P/C11	Citizenship Mr M Rudd	96%

A sidebar on the left contains a navigation menu with links to Dashboard, Data Collection Form, Announcements, Attendance, Behaviour, Homework, Timetable, Academic Calendar, and Parental Consent.

From the portal you can access information on:

- School attendance
- Homework
- Behaviour
- Timetable
- Important school announcements


You can also:

- Updating your contact details
- Add information about your child
- Send messages to school

If you have any problems getting set up with MCAS please email datateam@thecoleshillschool.org

Arrangements for September '23

<u>Year 7</u>		Wednesday 6 th Sept 2023	Thursday 7 th Sept 2023	Friday 8 th Sept 2023
8.40am	Morning Line Up	Enter school via green side gate and go to the Tennis Courts for line up		
8.45-9.05am	Registration	Year 7 Assembly	Form tutor	Form tutor
9.05-10.05am	Period 1	Form Tutor	Normal Lessons as per timetable	Normal Lessons as per timetable
10.05-11.05am	Period 2	Normal Lesson		
11.05-11.25am	Break			
11.25-12.25am	Period 3	Normal Lesson	Normal Lesson as per timetable	Normal Lesson as per timetable
12.25-1.05pm	Lunch			
1.10-2.10pm	Period 4	Normal Lesson	Normal Lessons as per timetable	Normal Lessons as per timetable
2.10-3.10pm	Period 5	Normal Lesson		
3.10pm (bell rings)	Leave school site	Exit school building and site via front of school or back (**no phones or devices to be seen or heard until outside green gates)		



 Bus Number	Arrival at school	Departure from School	Destination/Route	Company Information 
863	8.15am	15.15pm	Nether Whitacre, Furnace End, Shustoke, Whitacre Heath, Lea Marston, Water Orton, Coleshill Schools	Warwickshire County Council Operated by Meadway Executive Coaches 0121 773 8389 office@meadwaycoaches.co.uk
865	8.15am	15.20pm	Water Orton, Coleshill School	Warwickshire County Council Operated by Meadway Executive Coaches 0121 773 8389 office@meadwaycoaches.co.uk
868	8.10am	15.15pm	Over Whitacre, Shustoke, Maxstoke, Coleshill School	Warwickshire County Council Operated by PMJ Group Travel Tel: 07967317411 / 01827714914
115	8.10am	15.20pm	Curdworth, Water Orton, Coleshill School	Warwickshire County Council Operated by South Staffs Coach Hire Tel: 01827316722 sales@southstaffscoachhire.com
70	8.04am 8.33am	15.30pm	Marston Green, Chelmsley Wood, Coleshill School	Public Bus Operated by National Express Tel: 0121 254 6899 Lost Property 0121 254 6803
70	7.53am 8.35am	15.30pm	Castle Bromwich, Water Orton, Coleshill School	Public Bus Operated by National Express Tel: 0121 254 6899 Lost Property 0121 254 6803
891	8.15am	15.17pm	Chelmsley Wood, Marston Green	Public Bus Operated by National Express Tel: 0121 254 6899 Lost Property 0121 254 6803

For further information about school transport and bus passes please visit: <http://www.warwickshire.gov.uk/schooltravel>
or call : Warwickshire Education Transport team: 01926 412929:
Please visit: www.thecoleshillschool.org for up-to-date information and bus timetables

Outside buses:

X12 / X13 arrive at regular intervals to the bus stops immediately outside of school

WORK HARD, BE KIND, TAKE RESPONSIBILITY



Any questions?