



THE  
COLESHILL  
SCHOOL



# Prospectus 2023-2024





# Contents



## Subject

## Page

Welcome

3

Work Hard, Be Kind, Take Responsibility

4

Belonging

5

Standards and Expectations

6

The Curriculum

7

Monitoring Progress

8

The Coleshill Learner & SPIRIT

9

Inclusion

10

Children's University

11

Student Leadership & Wider Opportunities

12





# Welcome

Welcome to The Coleshill School, where we extend a warm welcome to all prospective parents and students.

At The Coleshill School, we are committed to fostering an environment that not only upholds high academic standards but also embraces ethical inclusivity at its core. Our guiding principles revolve around the values of working hard, being kind, and taking responsibility. As you embark on this exciting journey with us, we invite you to discover how we blend academic support and challenge with a deep sense of compassion and personal accountability. Our ambition is to ensure that every student thrives academically strong and morally in our vibrant educational community and are ready to contribute to the world around them.

We are proud to be a member of the Arthur Terry Learning Partnership, which is a growing multi-academy trust of thirteen primary schools and six secondary schools located in Birmingham, North Warwickshire and Staffordshire. With more than 9,000 students and over 1,000 members of staff, all students are distinctive, serving diverse communities, but all share the ATLP philosophy and values where students lie at the heart of all we do. In addition, our partnership with the Arthur Terry National Teaching School enables us to recruit the very best teachers for your child and ensure practice is evidence informed on what works to improve outcomes for our students. We are proud at our school, thank you for your support and we look forward to working with you and your child.

Miss R Brindley





# Work Hard, Be Kind, Take Responsibility

Our core values of "Work Hard," "Be Kind," and "Take Responsibility" are not just words on paper; they are the guiding values that shape our school culture and the foundation upon which we build a supportive and enriching educational experience for all our students.



**Work Hard:** At The Coleshill School, we instil a strong work ethic and resilience in our students from day one. This value means giving your best effort in every aspect of your academic journey. It is about approaching each lesson with curiosity and determination, completing assignments to the best of your ability, and persevering through challenges. We encourage students to set goals, stay organised, and take pride in their accomplishments.



**Be Kind:** Kindness is at the heart of our school community. It means treating every person with respect, empathy, and understanding. In our daily interactions, students are encouraged to be inclusive, support one another, and stand up against bullying or discrimination. We believe that a kind gesture, a friendly smile, or lending a helping hand can make a significant difference in someone's day. At The Coleshill School, we nurture an environment where kindness is not only valued but is also celebrated, creating a positive and inclusive atmosphere where every student feels safe, supported, and valued.



**Take Responsibility:** Taking responsibility means being accountable for your actions and choices. We empower our students to make responsible decisions both inside and outside the classroom. This includes owning up to mistakes and learning from them, as well as being proactive in seeking solutions to challenges. We encourage students to take pride in their school and community - fostering a sense of belonging and a commitment to making positive contributions.





# Belonging

The transition from primary to secondary school is a significant milestone in a student's educational journey. At The Coleshill School, we are aware of the importance of making this transition as smooth and supportive as possible.

We understand it can be both exciting and challenging, and we are dedicated to ensuring that every student feels safe, welcome, enjoys school and is well-prepared for this new and exciting chapter at The Coleshill School. Our comprehensive transition programme includes: induction days, primary school visits, and open dialogues with the teachers and staff who know your children best. We work closely with our local primary schools to build strong partnerships, ensuring that each student's individual needs and concerns are listened to and addressed. Whether it's through tailored academic support, pastoral care, or guidance around navigating the larger school environment, our goal is to provide the necessary scaffolding to help students not only adapt, but also thrive throughout their secondary school years.

**We view this transition as an opportunity for personal growth and development, and we are dedicated to being a reliable support system for every student as they embark on this exciting journey.**

**NEWBURGH**



**GREVILLE**



**DUDLEY**



**BEAUCHAMP**



Upon entering The Coleshill School, each student becomes a member of one of our 4 Houses: Newburgh, Greville, Dudley or Beauchamp.

Your child will be placed in a Year 7 tutor group linked to a House, and they will be looked after by a tutor who will follow their journey through school. All communication home in the first instance will be through the tutor and they will advise should any difficulties occur over work, behaviour or attendance. In addition, there is a Pastoral Leader, a Phase Leader and a member of the Senior Leadership Team who are specifically linked to Year 7.

**We are an experienced and supportive team, working together to ensure the best for your child.**







# Standards and Expectations

Uniform is an important aspect of belonging and visibly showing that a student is a member of The Coleshill School. Students are expected to wear the correct school uniform at all times, both in school and on journeys to and from school. Any students not following the appropriate guidelines with regards to uniform will be asked to contact home immediately to rectify the situation, and sanctions will be applied to persistent offenders not meeting the school expectations.

## Uniform Suppliers

Some of our garments may be purchased in stores throughout the area. However, school badges, house ties and items in house colours or with the school logo on can only be purchased through our school suppliers. Purchases can be made either online OR at the store in Sheldon.

Clive Mark Schoolwear  
2286 Coventry Road  
Sheldon  
B26 3JR  
Tel: 0121 722 2286  
[www.clivemark.co.uk](http://www.clivemark.co.uk)



Further information and specific details regarding our uniform can be found on our website by either typing the link or scanning the QR code.

[www.thecoleshillschool.org/parents/school-uniform](http://www.thecoleshillschool.org/parents/school-uniform)



## Our Digital Strategy



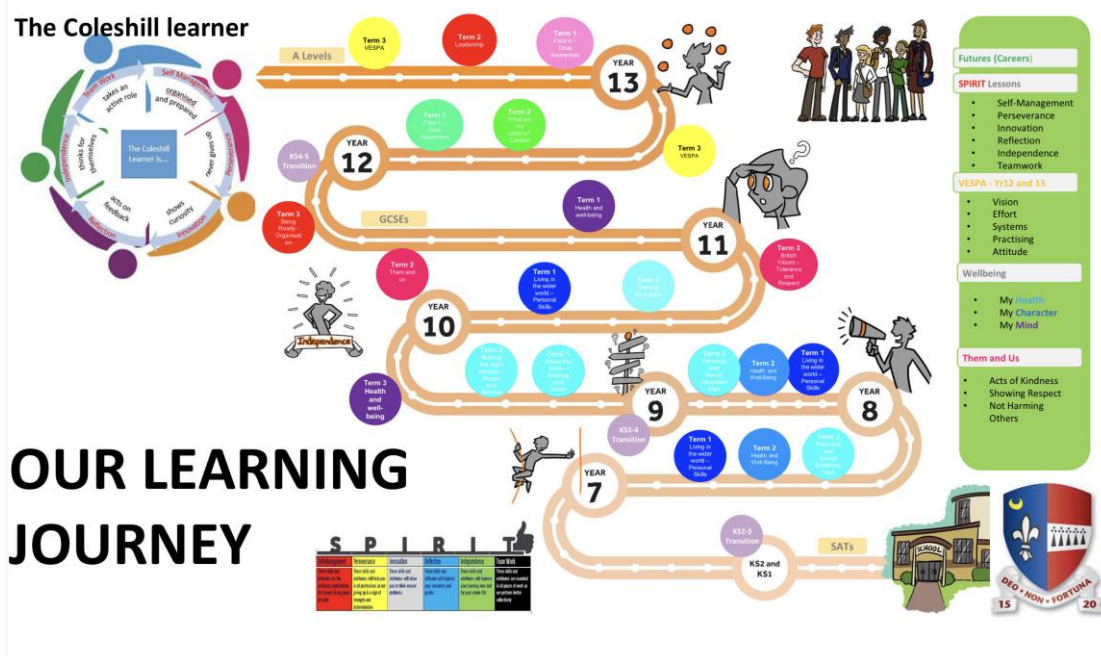
iPads will be used in all lessons for 'Do It Now' activities, as well as using other Apps for some/all of the lesson. Exercise books will still be used throughout the year – mainly for assessed work.





# The Curriculum

## The Coleshill learner



We take pride in our broad and balanced curriculum and strive to support all our students in becoming a Coleshill Learner.

There are 3 particular areas we...

## Ensuring students make good progress from Key Stage 2

We have an extensive transition programme where we regularly invite our primary partner schools to participate in activities to engage and familiarise the students with our school prior to their September start. Activities have previously included: practical science lessons, food technology, computing, music and PE. We work with primary specialists to ensure the Year 7 curriculum picks up from Year 6 and your child is challenged from day one to achieve their full potential.

## Grouping students for progress

Year 7 are initially taught in groups based on their Key Stage 2 data. They are in two blocks of subjects set around mathematics (with science and creative subjects) and English (with other EBacc subjects.) Both blocks have a 'set 1' group and 3 mixed ability groups. During the academic year these groups will be amended based on assessment data gathered throughout the year.



## Organisation of the curriculum

We organise our subjects into Faculties led by Faculty Leaders, who are supported by a member of the senior leadership team. Each subject is led by a curriculum leader. For information related specifically to subjects, our website provides curriculum information and the contact details of our subject teachers.



# Monitoring Progress

Our provision is a coherent and carefully sequenced (knowledge engaged) curriculum, based on principles of cognitive science. There is a whole school focus on the development of literacy and the application of acquired knowledge and skills to ensure children access the curriculum at a depth to promote mastery of the curriculum and understanding.

To understand how to improve, departments provide regular and meaningful opportunities for assessment and feedback, which equip our students to know, remember and do more. In each subject there are age-related knowledge and skills that a child should have learnt at a point in their schooling. As a school, we are ambitious and challenge all our children to be working to at least the Age-Related Expectations (ARE). At KS3, AREs will be reported using four words: Mastery, Established, Developing & Emerging – which are explained in more details in the boxes below.

## MASTERY

A Mastery pupil is **working above Age-Related Expectations**. They have mastered the key subject specific criteria and are exploring further opportunities and questions raised by a subject. A Mastery pupil often confidently attempts more challenging work.

## ESTABLISHED

An Established pupil is **working at Age-Related Expectations**. They can demonstrate a good understanding of all the key subject-specific criteria.

## DEVELOPING

A developing pupil is **working slightly below Age-Related Expectations**. They are showing an increased awareness of subject-specific criteria. A Developing pupil may struggle with some of the more complex skills.

## EMERGING

An Emerging pupil is **working below Age-Related Expectations**. They are just beginning to learn subject-specific key criteria. An Emerging pupil may require additional scaffolding and support.

At The Coleshill School, all students should be working at 'Established', (as a minimum) in all subjects, and we aim for many to demonstrate 'Mastery', for each unit of work. Through the design of our curriculum, subject specialists have created Age-Related Criteria (ARC) for KS3 in order to measure pupil progress. Teachers use these ARCs a reference point of the ARE for a unit of work, which will equip them to provide informed feedback to a student on how they might improve their work further. For a child to be assessed as 'Established' (working at the expected standard) they will need to have achieved – and have evidence of – being able to work consistently against the ARC specified by Subject Leads.

All students will complete a minimum of 3 Key Assessments during the Academic Year, one per term, in each subject they study. This will enable teachers to adapt their teaching and approach, so that students develop the necessary skills and address gaps in knowledge to continue to make progress.

Reports for pupils in Years 7 will be issued throughout the academic year and contain a pupil's current Age-Related Outcome (ARO) for all subjects being studied. The report will also contain an 'attitude to learning' score in each subject, as well as important information about attendance and the number of rewards the pupil has accumulated since the beginning of the academic year.





# The Coleshill Learner & SPIRIT

The Coleshill Learner aims to promote and cultivate key learning habits which all students need to become independent, confident learners in school and beyond. The Coleshill Learner is promoted and reiterated in: tutor time, during subject lessons, assemblies, extra-curricular opportunities and enrichment.

We take pride in our rewards and praise system at The Coleshill School, known as SPIRIT, which embodies the essence of 'the Coleshill Learner' – encouraging students to become excellent 'Coleshill Learners' through rewards and incentives.



## SPIRIT stands for:

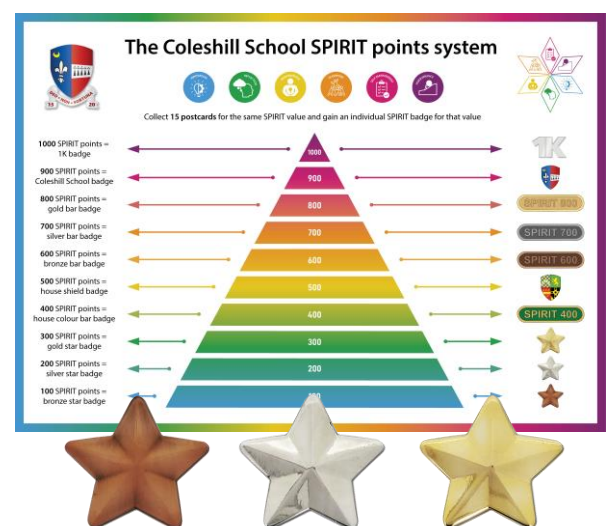
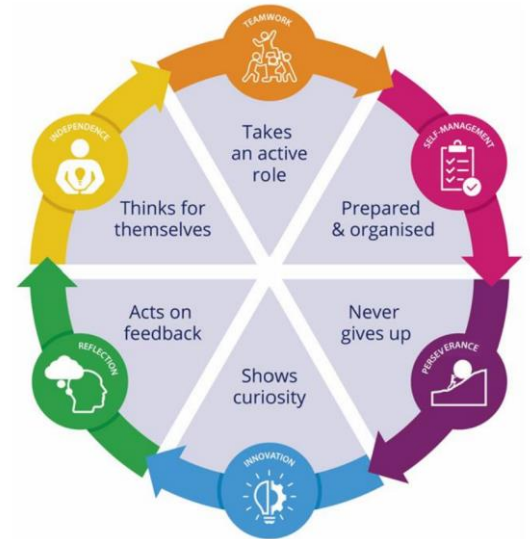
- **Self-Management**
- **Perseverance**
- **Independence**
- **Reflection**
- **Innovation**
- **Teamwork**

These are key attributes that we believe are essential for personal growth and success.

Throughout their time with us, students have the opportunity to earn SPIRIT points as recognition for demonstrating these key attributes, and embodying our school's core values of "Work Hard," "Be Kind," and "Take Responsibility."

Accumulating SPIRIT points not only recognises students' personal growth and development, but also comes with a range of incentives. Students can earn certificates, badges, and even compete for half-termly prizes - fostering a healthy sense of achievement and motivation. SPIRIT points are awarded both in and out of lessons, showcasing our dedication to recognising commitment, kindness and effort in all aspects of student life.

Our SPIRIT and school values underpin our school culture and rewards. We not only nurture academic effort and achievement, but also the holistic development of students' character and positive contributions to the wider school and its community.



**Work Hard – Be Kind – Take Responsibility**



# Inclusion

Our Inclusion Team at The Coleshill School, plays a pivotal role in ensuring that our institution remains ethically inclusive and committed to providing a high quality curriculum.

Led by our SENCo, Assistant SENCo and supported by our strategic leads (Specialising in Autism Spectrum Disorder (ASD) and Social, Emotional, and Mental Health (SEMH)), the team is determined in their approach to provide appropriate support to our SEND students both inside and outside the classroom.

Our newly established Inclusion area within the school represents a significant milestone in our mission to offer tailor-made and student-centred provision.

At The Coleshill School, we firmly believe that inclusivity, equality and belonging are our strength. Our Inclusion Team ensure every student receives the best possible support, and whether it's through personalised learning plans, one-on-one support, or specialised interventions, they are committed to creating an inclusive and nurturing environment where every student can flourish both academically and personally.





# Children's University

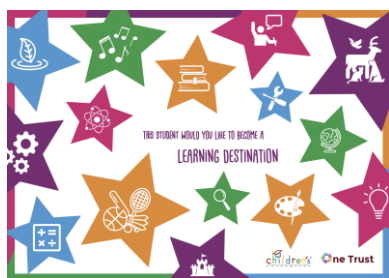
Academic attainment is a crucial part of a child's life, but outside the classroom, the Children's University programme aims to engage, inspire and help all children to learn through a range of structured quality-assured extra-curricular learning experiences - including: adventure, imagination and kindness. The ultimate aim of the programme is to assist in enabling children to reach their full potential, and to instil a love of learning.



At The Coleshill School, we are proud to lead Children's University across our ATLP trust, and we aim for all of our Year 7 students to be enrolled in the programme. This is an exciting project that reflects our vision of students learning beyond the classroom and aspiring for excellence.

When a new Year 7 student joins The Coleshill School, they receive a 'Passport to Learning' with an individual login. The 'Passport to Learning' can be accessed on a digital platform, and students use them to collect 'stamps' and hours of accredited learning - keeping a record of their own activities and hours of learning outside the classroom in their passports, whilst they see their interests build and skills develop.

The number of hours a student collects equates to one of 30 possible awards – which range from 30 hours all the way up to 1000 hours, and include certificates, pin badges and a graduation ceremony at the University of Birmingham.



Our students can collect hours through a huge variety of in-school activities, extra-curricular opportunities and even Public Learning Destinations, for example: visiting a local National Trust site with family and friends. Our very own ATLP Children's University newsletter will also provide opportunities to gain more hours over school holidays, and will be circulated once every half term.



For more information, you can visit the website by either typing the link or scanning the QR code (right)

[www.childrensuniversity.co.uk](http://www.childrensuniversity.co.uk)







# Student Leadership & Wider Opportunities

Student leaders are young people that have a desire to positively contribute to the life of the school. They have a vision of what they want to achieve and the courage to achieve it, and they have the potential to empower and support their peers. Therefore, at The Coleshill School students can apply and be considered for one of many roles within our Student Leadership Team. In return, students will have the opportunity to develop key skills in leadership, teamwork, and collaboration - to name but a few, whilst making improvements to the lives of those at The Coleshill School and in the wider community. They will receive a badge and a student lanyard for their role, and will be able to demonstrate their contribution to the school through earning an AQA Leadership Award.



## Enrichment Clubs & Activities

We have an extensive range of extra-curricular clubs such as: Computer Club, Library & Resource Centre, Home Learning Club, Performing Arts, School productions and rehearsal, STEM Club (Science, Technology, Engineering & Maths). We also run sports clubs/teams, including; Football, Cricket, Netball, Trampolining, Gymnastics, Dance, Athletics, Rugby and Basketball, and we are always open to new ideas!

## Trips & Visits

The following trips and visits are just a few that have taken place for students at The Coleshill School:

### Overseas Trips & Visits



- \* Barcelona, Spain
- \* Euro Disney, France
- \* Auschwitz, Poland

### Other Recent Trips & Visits

- \* Theatre visits
- \* Royal Shakespeare Company
- \* Universities (Cambridge, Warwick, Birmingham)
- \* The Houses of Parliament
- \* Art Galleries in Birmingham and London



**Work Hard – Be Kind – Take Responsibility**





THE  
COLESHILL  
SCHOOL



# Get in touch...



If you have any questions or require any further information, we are here to help. Please contact us at:

[enquiries@thecoleshillschool.org.uk](mailto:enquiries@thecoleshillschool.org.uk)

# We really hope to see you soon!